



**INTERNATIONAL INSTITUTE FOR  
PEOPLE WITH DISABILITIES**

A UNIT OF DIFFERENT ART CENTRE

A Comprehensive Centre for the  
Empowerment of Children with Special Needs  
@ KASARAGOD

**JOIN us in this MISSION  
for making their  
LIVES BETTER**



**DIFFERENT ART CENTRE**

[www.differentartcentre.com](http://www.differentartcentre.com)

Different Art Centre at the Magic Planet  
Kinfra Film & Video Park Campus  
Sainik School PO, Thiruvananthapuram  
Kerala 695585, India  
Phone : +91 94477 68535, 94475 35535  
Email: [info@differentartcentre.com](mailto:info@differentartcentre.com)



**INTERNATIONAL INSTITUTE FOR  
PEOPLE WITH DISABILITIES**

A UNIT OF DIFFERENT ART CENTRE



**DIFFERENT ART CENTRE**

[www.differentartcentre.com](http://www.differentartcentre.com)

A Comprehensive Centre for the Empowerment of Children with  
Special Needs @ KASARAGOD



Dear All,

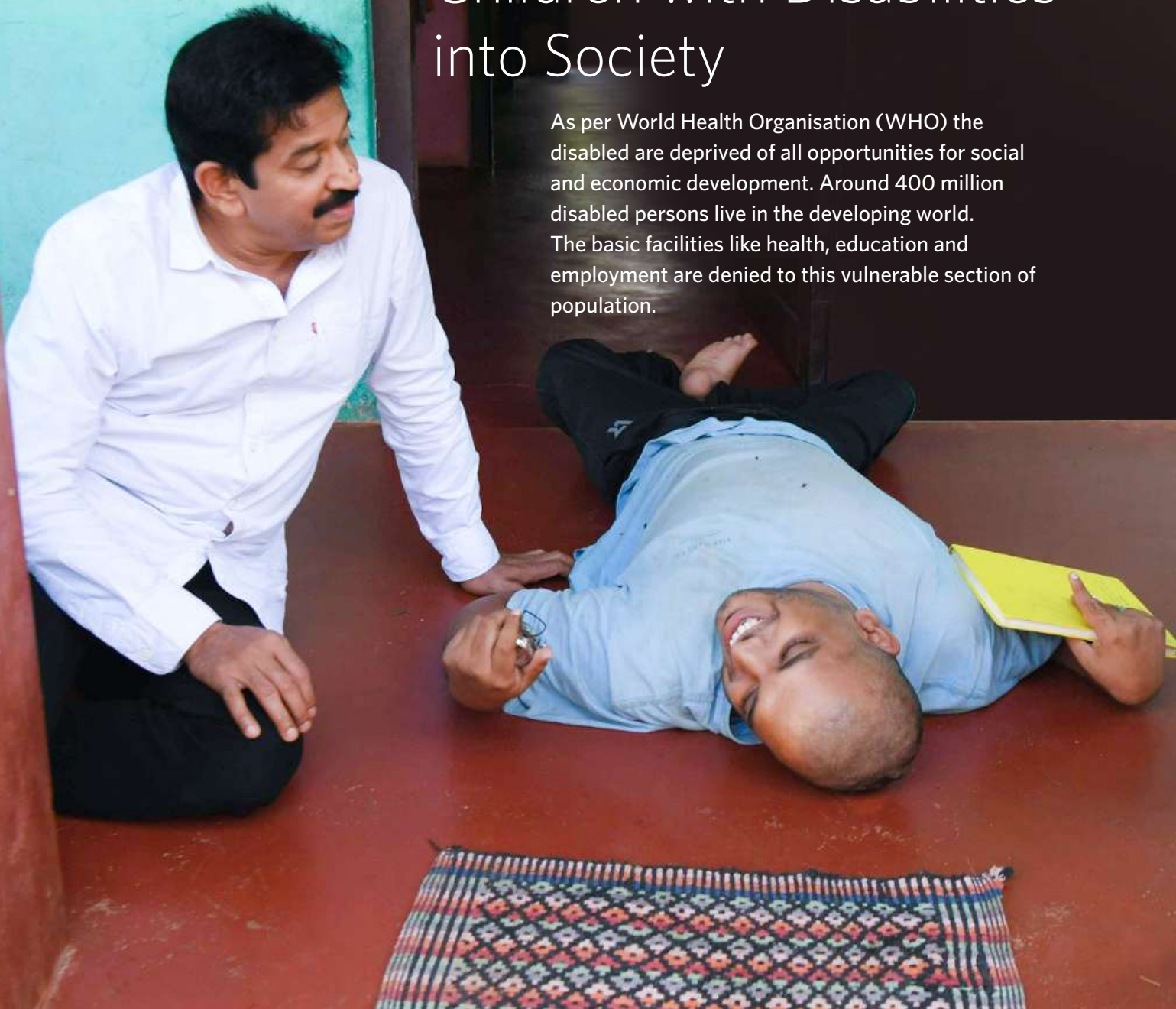
With the immense support of all our well-wishers, we could make magical changes in the lives of more than 300 children with special needs, through the programs at Different Art Centre. However, the number of special ones in critical need are many times higher than that we can support at our existing centre. Every day, we are getting 100s of calls from their parents, hoping for a light in their Childrens' life.

While announcing this new centre at Kasaragod, the only thought was to spread this light of hope into more lives. At the same time, being confident about the scope of this endeavour in making their lives better, we realize that the responsibility is huge. All that we have is the boundless love from our children at DAC and the hope of support from good souls like you, who have been the backbone in all the new steps that we have taken for the well-being of these children.

*Gopinath Muthukad*

# Need for Integrating Children with Disabilities into Society

As per World Health Organisation (WHO) the disabled are deprived of all opportunities for social and economic development. Around 400 million disabled persons live in the developing world. The basic facilities like health, education and employment are denied to this vulnerable section of population.



# Prevalence of Mental and Physical Health Disorders at Kasaragod



There are several studies which have established linkages between aerial spraying of endosulfan and the growing health disorders in Kasaragod district.

Over the years, other studies confirmed these findings, and the health hazards associated with endosulfan are now widely known and accepted.





# What study reports says???

01

A report by Government of Kerala (2011) pointed out that children were the worst affected by Endosulfan, leading to congenital anomalies, intellectual disability, cerebral palsy, epilepsy and multiple deformities.

02

Though there are debates on the validity of different studies on the effects of Endosulfan, the November 2010 health department survey is considered as the most comprehensive which identified 2,836 affected persons in 11 panchayats.



INTERNATIONAL INSTITUTE FOR  
PEOPLE WITH DISABILITIES  
A UNIT OF DIFFERENT ART CENTRE

03

Further, the lack of health infrastructure, accessibility issues and the lack of capacity of the system to address the needs of affected persons have aggravated the situation there (Irshad and Joseph, 2015).

04

Such an alarming rise in the prevalence of intellectual disability in Kasaragod resulted in public outrage throughout Kerala state.



# What is International Institute for People with Disabilities

- IIPD is a division of Different Art Centre, an innovative model for art-based rehabilitation of Children with Special Needs.
- This model is conceptualized and successfully run by Kerala Sree Gopinath Muthukad, the renowned magician, Executive Director of DAC and the Academy of Magical Sciences, UNICEF Celebrity Supporter, Brand Ambassador of Child Friendly Kerala Initiative.



# Vision:

World class facilities for training and empowerment of adolescents with special needs and thereby enable them to lead an independent life.

# Mission:

- To function as a comprehensive centre which comprises of innovative programs and endeavors, collectively aims at total development of children with special needs.
- The training in Magic and other art forms will be the key program. Along with that, various innovative interventions and services will be implemented by jointly working with national and international experts.
- The society will be participated in the process of empowerment, there by effective social inclusion of PwDs.
- To act as an international model of art-based rehabilitation of children with special needs.





INTERNATIONAL INSTITUTE FOR  
PEOPLE WITH DISABILITIES  
A UNIT OF DIFFERENT ART CENTRE

Different Art Centre  
and  
Magic Planet

Special/Para  
Sports  
Centre

Experience  
centre for  
assistive  
devices/ for  
sports and arts

Early  
Intervention  
Centre and  
Therapy Units  
for older  
children

Emerging  
Therapy  
Services like  
Animal  
Assisted  
Therapy and  
Horticulture  
Therapy

Special School  
and science  
research centre

Supermarket and  
Cafeteria Operated  
by PwDs

Livelihood  
Centre for  
mothers

Academic  
Centre

Vocational  
Skill Training  
Centre

Genomic  
Research  
Centre

Farmhouse  
operated by  
PwDs

# Multiple Phases of Implementation

PHASE 01

- Different Art Centre and Magic Planet
- Sports complex for People with Disabilities
- Experience and Exhibition centre for Assistive Devices and Technologies for Arts and Sports
- Guest house Facilities
- Food court
- Administration Block
- Early Intervention Centre, Therapy Facilities for older age group

PHASE 02

- Special School and Therapy facilities for older children
- Livelihood centre for mothers
- Vocational Skill Training Centre
- Animal Assisted Therapy and Horticulture Therapy
- Dormitories

PHASE 03

- Academic Block (Conducting RCI courses)
- Genomic Research Unit
- Livelihood Centre and Production Unit
- Supermarket and Cafeteria operates by PwDs

# Project Components: Phase I

- Different Art Centre and Magic Planet
- Sports complex for People with Disabilities
- Experience and Exhibition centre for Assistive Devices and Technologies for Arts and Sports
- Guest house Facilities
- Food court
- Administration Block
- Early Intervention Centre, Therapy Facilities for older age group

# INDIA FORT

## Different Art Centre

- For training in different art forms; magic , music, dance, instrumental music , drawing and painting
- 5 - 6 Separate venues for each category - for training and performance
- Capacity to accommodate a maximum of 500 children



# Magic Planet

## *A unique model for the social Inclusion of PwDs*

- The concept of magic planet will be replicated to ensure the participation of society in the process of inclusion
- The visitors of the magic themed entertainment park audiences the art performances of the special children
- 5 theaters for magic and related entertaining art performances of seating capacity ranging from 250 - 500
- One venue , exclusively for the professional magic show by youngsters with disabilities





# Training in Different Art Forms and Permanent Performance Platforms



Magic



Music



Dance



Instrumental Music



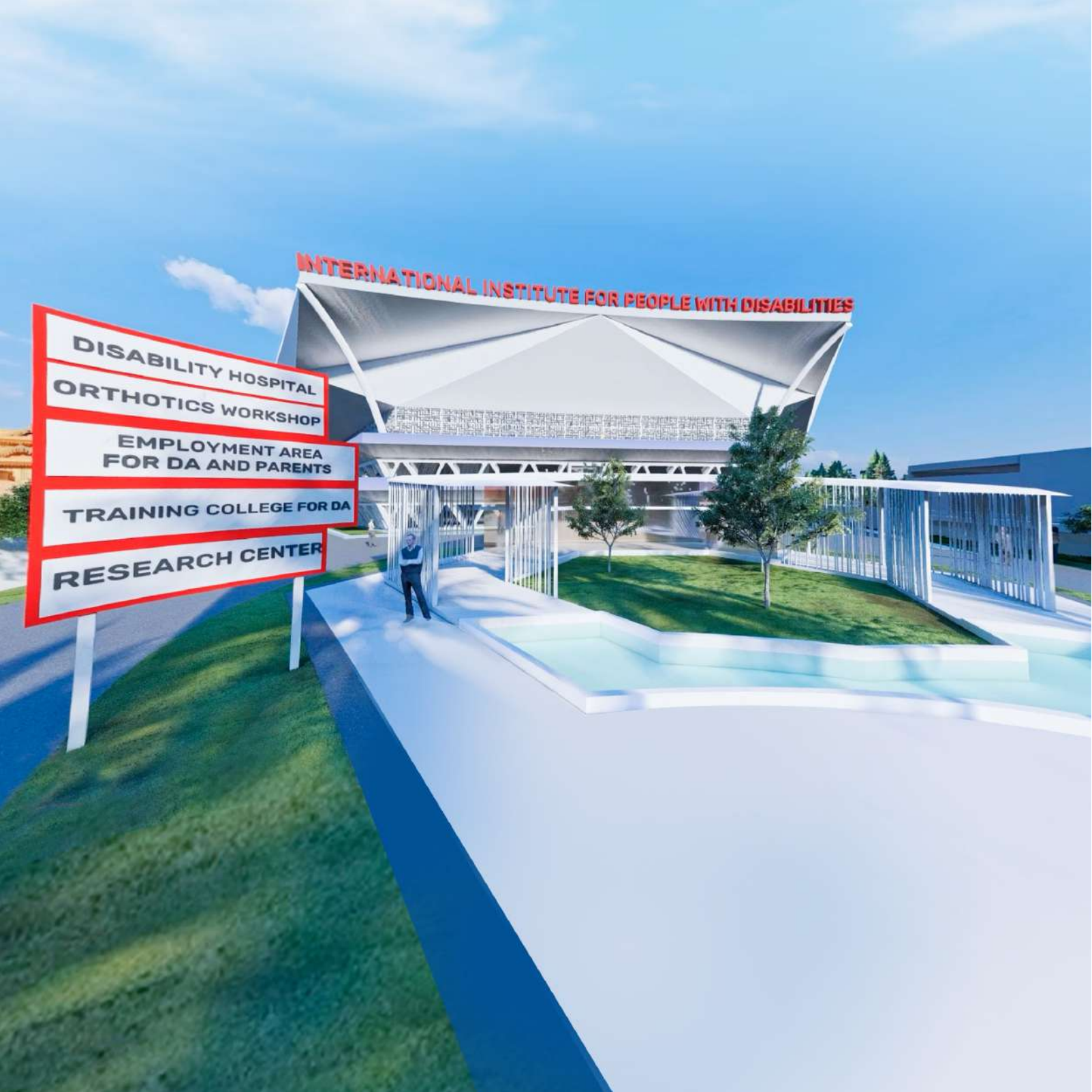
Drawing and Painting





**INTERNATIONAL INSTITUTE FOR PEOPLE WITH DISABILITIES**

- DISABILITY HOSPITAL**
- ORTHOTICS WORKSHOP**
- EMPLOYMENT AREA FOR DA AND PARENTS**
- TRAINING COLLEGE FOR DA**
- RESEARCH CENTER**



# Disability Sports facility at IIPD

## The Need

- Often lack appropriate facilities and activities to bring out their talents.
- There is no advanced special sports facility at southern or middle part of India (except the upcoming initiative at Vizak under DePWD)
- Even the institutions dedicated for working on para sports, like CPSAK , struggles to access facilities to identify and train talents with disabilities
- PwDs individual identify coaches and uses locally available facilities (facing the accessibility challenges)
- The sports complex at IIPD;
- Work at the grassroots levels to promote and develop sporting talent - identify and promote talents with disability by associated with institutes (CPSAK, IBFF, PCI etc.)
- Provide training facilities for disabled to compete and win Paralympics, Deaflympics, Special Olympics and other International events
- The indoor and outdoor facilities cater to the specific challenges of the athletes and motivate young people with disabilities to participate and provide them with the environment to train and compete in the Global Stage.



## Outdoor Facilities

- Athletic track 800 meter with field in the middle
- CP/Blind Football
- Shooting and Archery

## Indoor Facilities

- Wheelchair Basketball
- Swimming
- Table Tennis / Badminton
- Sitting Volleyball
- Powerlifting
- Boccia





# Experience and Exhibition Centre for Assistive Technologies (ATs) for Recreational Activities



# Experience and Exhibition Centre for Assistive Technologies (ATs) for Recreational Activities

- Exhibit ATs for training and participation in different art forms such as;
- ATs for dance ( wheelchair, crutch, or cane), drawing and painting
- For music (Apollo Ensemble - windows software which links switches to sounds and images
- Eyegaze - eye tracking technology etc),
- Adaptive music instruments
- Exhibit ATs for training and participation in different sports
- Light-weight wheelchairs for racing, basketball, and tennis.
- Rugged, all-terrain wheelchairs for hiking, snow, or sand sports.
- Handcycles or bicycles
- Lower-Limb Prosthetic Devices
- Prosthetic Feet, Arms & Hand Sports Prosthetics
- Prosthetics for Shooting and Archery and swimming

# Demonstration of High-Tech Assistive Technologies for Functional Assistance of PwDs

- Alternative and augmentative communication devices (AAC)- speech generating devices, voice amplification aids and communication software
- Multi-sensory feedback devices or stimulant environment for teaching and learning in children with Intellectual disability.
- Recreational aids- to enable participation in social/cultural events and sports- Devices to enable participation in sports, social, cultural events, adaptive controls for video games. (eg:- Nintendo Wii games)
- Environmental Controls- Electronic systems that help people control various appliances, switches for telephone, TV, or other appliances which are activated by pressure, eyebrows or breath.
- Computer access aids- Headsticks, light pointers, modified or alternate keyboards, switches activated by pressure, sound or voice, touch screens, special software, voice to text software that enable persons with disabilities to use a computer.





# Accessible Home Design : Experience and Demonstration Unit

- The inaccessible daily living environments at home and workspaces significantly reduces the quality of life of people with disabilities (PwDs).
- The modifications of doors, floor, steps, cabinets and countertops, grab bars, ramps and railings, bedroom (bed, cabinets, grab bars, switches), toilets (doors, seats, taps), lawns and garden areas (ramps, railings) etc. can minimize the difficulties of PwDs in activities of Daily Living.
- Act as an experience centre of daily living physical environments (home and workspace) where the user can explore different potential options for daily living
- Assess the level of difficulties experienced by the selected beneficiaries (Individual need assessment) when performing the daily activities at home and workspace, evaluation of home or workspace conditions, and will suggest feasible modification options





## Early Intervention Centre

*Every child you see is someone's whole world.....*



- Several disabilities can be prevented, eliminated and their degree of disability reduced through screening detecting and intervening with possible solutions at the right time.
- 0-6 years of age is the crucial period of physical, sensory, cognitive and behavioral development
- EIC for shaping stronger futures for young children with impairments by providing a cross-disability, composite multi-functional facility for therapeutic interventions
- To help reduce the disability burden and also counsel the parents under one roof.



# Components of Early Intervention Centre

- Medical Services - for diagnostic and evaluation purpose
- Psychiatry Services - for behavioral disorders
- Occupational Therapy and Physical Therapy (OT , PT and /Sensory Units) - for self-help skills, adaptive behavior and play, sensory, motor, and postural development
- ADL Facility
- Psychological services - administering and interpreting psychological tests and evaluation of a child's behavior related to development
- Cognition services - identifying cognitive delays and providing intervention to enhance cognitive development
- Virtual Reality Room
- Audiology - identifying and providing services for children with hearing loss
- Speech and Language Pathology
- ENT Services and Dental Services
- Social Support Services and other Supplementary Services

# Project Components: Phase II

- Special School and Therapy facilities for older children
- Livelihood centre for mothers
- Vocational Skill Training Centre
- Animal Assisted Therapy and
- Horticulture Therapy
- Dormitories



## Special School

- To provide an inclusive learning environment for students with a wide variety of learning exceptionalities. Under this special school, an innovative centre to promote scientific curiosity in the children will also be included.

# Clinic based Therapy Services including advanced Virtual Reality and Occupational Therapies for older children

The Departments planned under therapy centre;

- Department of Psychology.
- Department of Physiotherapy.
- Department of Audiology and Speech Language Pathology.
- Department of Occupational Therapy.
- Department of Special Education.
- Dentistry.
- Units for Sensory Integration and Virtual Reality.





Livelihood Centre for Parents



# Vocational Skill Training Centre for PwDs

Targeted on development of essential skills enhancing their employability,  
supporting their personal development, and performances.



Emerging Therapy Services like  
Animal Assisted Therapies,  
Pisci Culture Therapy,  
Horticulture Therapy etc.



# Animal Assisted Therapy (AAT)

to improve the social, emotional, or cognitive functioning of the children with special needs. Studies have documented some positive effects of this therapy on subjective self-rating scales and on objective physiological measures such as blood pressure and hormone levels.



# Project Components: Phase III

- Academic Block (Conducting RCI courses)
- Genomic Research Unit
- Livelihood Centre and Production Unit
- Supermarket and Cafeteria operates by PwDs

# Academic Centre Conducting Rehabilitation Courses Certified by Rehabilitation Council of India

The centre will offer courses like;

- Special Education Courses.
- Certified Courses for Caregivers.
- Research facilities.



# Centre for Genetic Diagnosis

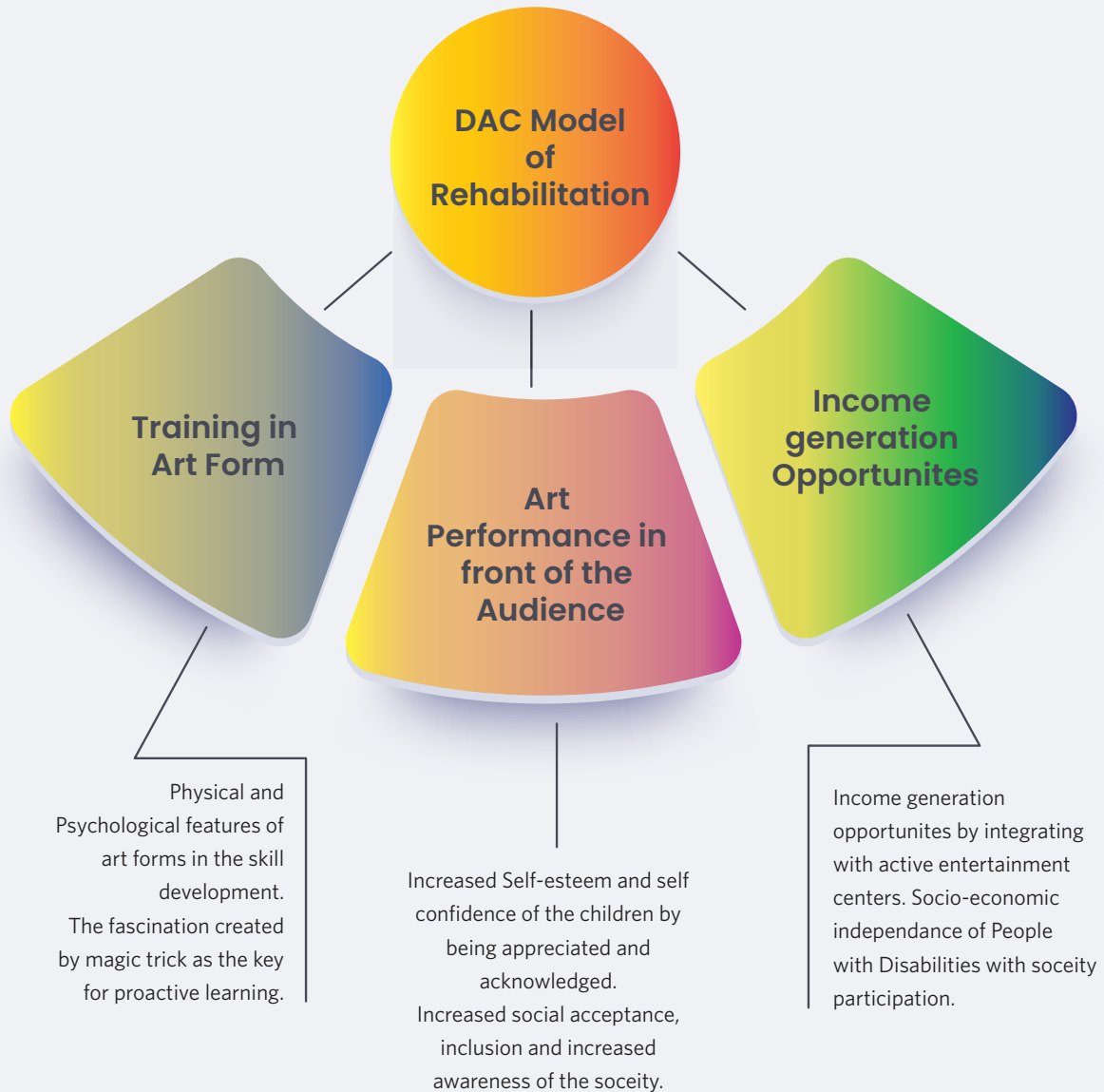


- For Genetic evaluation and appropriate descriptive diagnoses.
- To Guide families for evidence-based treatments and supports, comprehensive care for individuals with neurodevelopmental disorders includes a search for an underlying etiologic diagnosis.

Farmhouse managed by PwDs



# Unique model of Empowerment through Community Participation

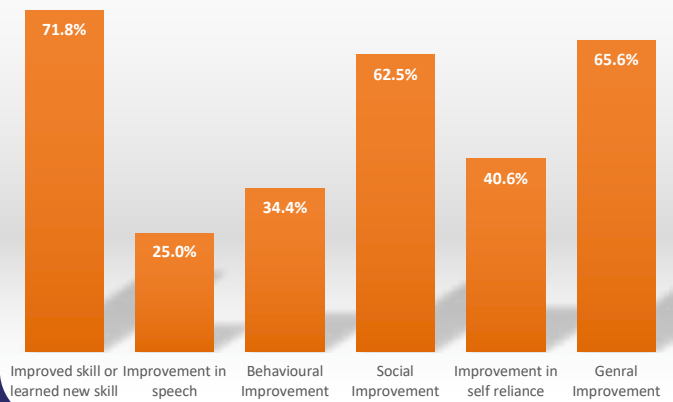






## Impact of the Program

Study Results by Child Development Agency , Govt. of Kerala



# About our Founder

We would not have done this without the great inspiration from a leader like Gopinath Muthukad.

## Positions held

Executive Director, The Academy of Magical Sciences

Founder, Magic Planet & the Different Art Centre

Celebrity UNICEF advocate

Ambassador for Kerala State Commission for Protection of Child Rights

## He is a recipient of the below coveted awards

Kerala Sangeetha Nataka Academi Award 1995

Kerala Sangeetha Nataka Academi Fellowship 2017

First ever Kerala Sree Award 2022

## Recognition beyond borders

Gopinath Muthukad set several firsts and won national and global recognitions including the coveted Merlin Award for Magicians. Because of his credibility and ability to communicate critical messages on child rights to masses, he was conferred the status of Celebrity UNICEF Supporter to join the efforts of the UN agency in improving condition of children in the state of Kerala. The philanthropic tasks he undertook made him amongst the finalists for Leader of the 21st Century by San Francisco University in 2019.

A motivational speaker, he is a widely accepted personality among children and the elderly. A good orator and author of several books, he has not failed to influence his audience through his magical outlook. Supporting the cause of national integration, he travelled across the length and breadth of India, performing magic.

### Certificate of Excellence from Kerala State Commission for Protection of Child Rights

Special recognition for the outstanding contribution towards facilitating children with mental and intellectual challenges to integrate into social main stream and become contributing members of society.



All that we have  
now is this  
20-acre land and  
the boundless  
hope from these  
special ones



Please join us for  
making their lives  
better.....





**DIFFERENT ART CENTRE**

[www.differentartcentre.com](http://www.differentartcentre.com)

Different Art Centre at the Magic Planet  
Kinfra Film & Video Park Campus  
Sainik School PO, Thiruvananthapuram  
Kerala 695585, India  
Phone : +91 94477 68535, 94475 35535  
Email: [info@differentartcentre.com](mailto:info@differentartcentre.com)



**INTERNATIONAL INSTITUTE FOR  
PEOPLE WITH DISABILITIES**

A UNIT OF DIFFERENT ART CENTRE

A Comprehensive Centre for the Empowerment of Children with  
Special Needs @ KASARAGOD